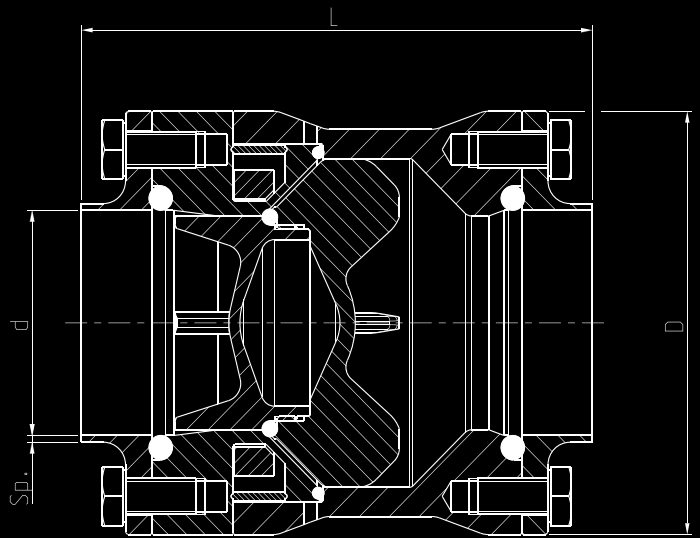
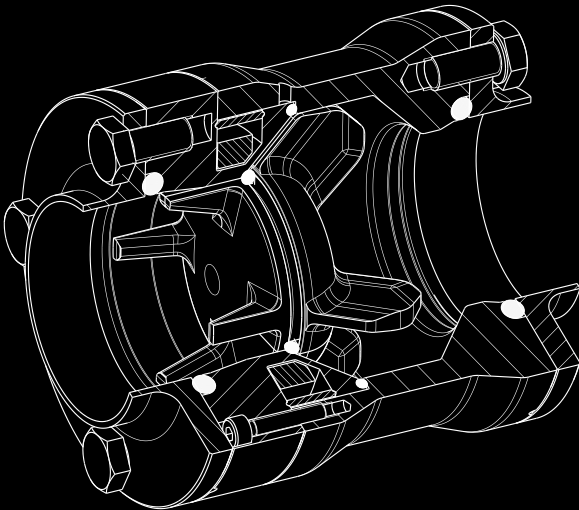




## TECHNICAL DATA - WELDING ENDS



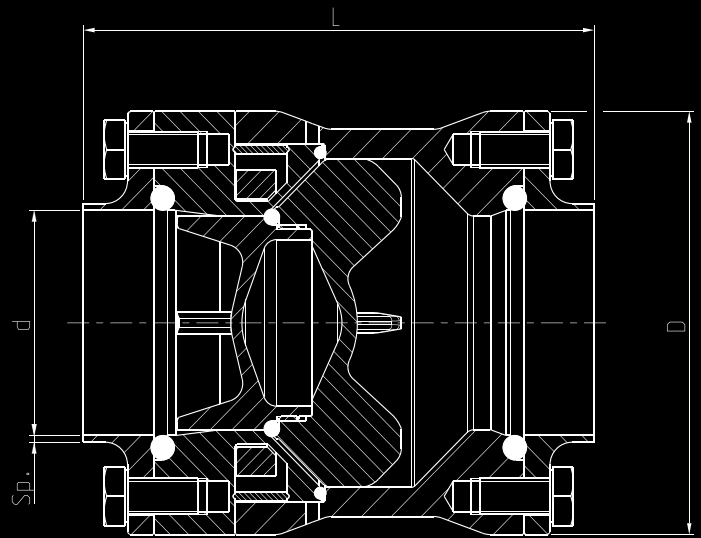
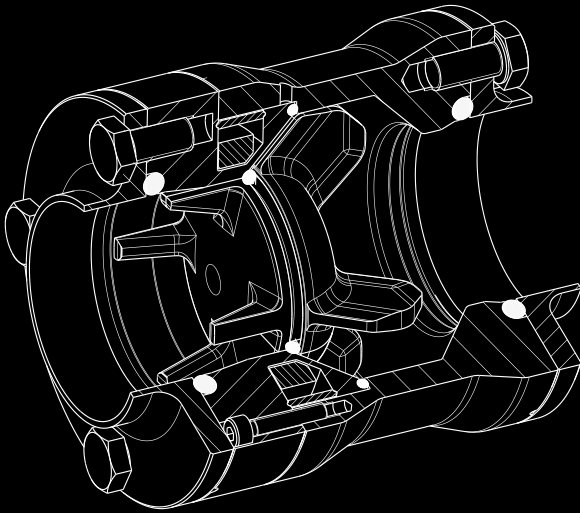
DIN 11850 (DIN 11866 Reihe A) > R

Dimension	L (mm)	D(mm)	d(mm)	Sp (mm)	Weight(kg)
DN25	84,5	62	26	1,5	1,1
DN40	104	79,5	38	1,5	2,2
DN50	116	94	50	1,5	3,3
DN65	126	116	66	2	5
DN80	147,5	134,5	81	2	7,3
DN100	155	155	100	2	9,2
DN125	176,5	199	125	2	19





## TECHNICAL DATA - WELDING ENDS



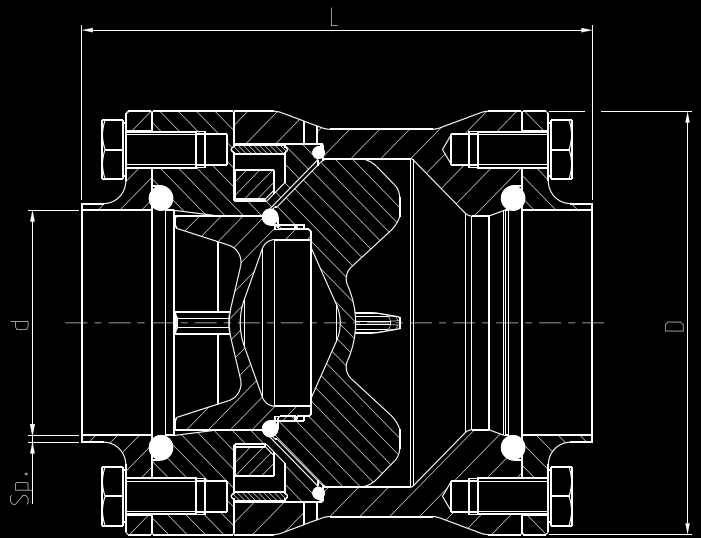
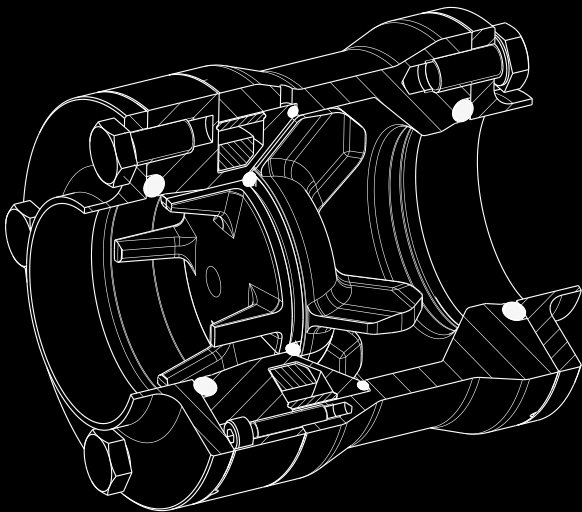
ASME BPE (DIN 11866 Reihe C) > T

Dimension	L (mm)	D(mm)	d(mm)	Sp (mm)	Weight(kg)
1"	84,5	62	22,1	1,65	1,1
1-1/2"	104	79,5	34,8	1,65	2,2
2"	116	94	47,5	1,65	3,3
2-1/2"	126	116	60,2	1,65	5
3"	147,5	134,5	72,9	1,65	7,3
4"	155	155	97,38	2,11	9,2
5"	176,5	199	121,46	2,77	19





## TECHNICAL DATA - WELDING ENDS



SMS (EN 10357 series D) > N

Dimension	L (mm)	D(mm)	d(mm)	Sp (mm)	Weight(kg)
<b>DN25</b>	84,5	62	22,6	1,2	1,1
<b>DN38</b>	104	79,5	35,6	1,2	2,2
<b>DN51</b>	116	94	48,6	1,2	3,3
<b>DN63,5</b>	126	116	60,2	1,6	5,4
<b>DN76,1</b>	147,5	134,5	72,9	1,6	7,3
<b>DN101,6</b>	155	155	97,6	2	9,2

